

**BY ORDER OF THE COMMANDER  
EDWARDS AIR FORCE BASE**

**EDWARDS AIR FORCE BASE  
INSTRUCTION 32-7064**



**20 AUGUST 2020**

**Civil Engineering**

**MANAGEMENT OF  
HUNTING AND FISHING PROGRAM**

---

**ACCESSIBILITY:** Publications and forms are available on the e-Publishing website at [www.e-Publishing.af.mil](http://www.e-Publishing.af.mil) for downloading or ordering

**RELEASABILITY:** There are no releasability restrictions on this publication

---

OPR: 412 CEG/CEV

Certified by: 412 CEG/CL,  
(Mr. James Judkins)

Supersedes: EDWARDSAFBI32-7064,  
30 August 2018

Pages: 29

---

This Edwards Air Force Base Instruction (EDWARDSAFBI) implements AFMAN 32-7003, *Environmental Conservation*, and the Edwards AFB *Integrated Natural Resources Management Plan* (INRMP). It provides informational guidance on all permitted hunting and fishing activities conducted on Edwards AFB beyond restrictions outlined in California State Regulations. It applies to all persons who hunt and fish on Edwards AFB (Attachment 1). This instruction does not require tiers at or below the Wing level. Waiver authority for this instruction is the 412th Test Wing Commander. This publication may be supplemented or further implemented/extended. Refer recommended changes and questions about this publication to the OPR listed above using the Air Force Form 847, *Recommendation for Change of Publication*; route Air Force Forms 847 from the field through the appropriate chain of command. Ensure that all records created as a result of processes prescribed in this publication are maintained in accordance with (IAW) AFI 33-322, *Records Management and Information Governance Program*, and disposed of IAW the Air Force Records Disposition Schedule (RDS). The use of the name or mark of any specific manufacturer, commercial product, commodity or service in this publication does not imply endorsement by the Air Force.

**SUMMARY OF CHANGES**

This document has been substantially revised and must be completely reviewed. Major changes include: Fee increases for all permits to more closely align to community prices for similar programs and added new disabled veteran hunting permit, daily hunting permit and partial season duck blind reservation. These additional categories for permitting better align with management activities and community recreational needs. Incorporated additional functionality

with the online permitting system with the check-in/check-out function, to track hunting and fishing activities in real time, and requiring online reporting unless online system is down. Removed Form 6012 Hunting/Fishing Permit, as all permits are now electronic through the online system. For waterfowl hunting: Specifically addressed Youth Hunt dates to follow the State of California. Addressed the use of other hunters' equipment and misbehaving hunting dogs. Required all carcasses and animal parts be removed off site and disposed of appropriately. Restricted driving on roads within the Piute Ponds Complex one hour prior to shoot time. Provided clarifications on blind inspections. Addressed penalties for falsifying information for eligibility or priority levels for the duck blind drawing. Required e-mail addresses to contact information requirements. Specified that a blind partner may be assigned up to one week prior to opening weekend of the duck season.

<b>Chapter 1—ROLES AND RESPONSIBILITIES</b>	<b>5</b>
1.1.    412th Test Wing Commander (412 TW/CC).....	5
1.2.    412th Civil Engineer Group:.....	5
1.3.    412th Security Forces Squadron (412 SFS).....	5
<b>Chapter 2—GENERAL PERMIT AND DUCK BLIND RESERVATION PROVISIONS</b>	<b>7</b>
2.1.    Hunting & Fishing permits are required: .....	7
2.2.    Duck blind reservations: .....	7
<b>Chapter 3—GENERAL HUNTING PROVISIONS</b>	<b>8</b>
3.1.    CDFW laws.....	8
3.2.    All people who hunt on Edwards AFB must: .....	8
3.3.    It is mandatory that: .....	8
3.4.    The use of a non-motorized watercraft: .....	8
3.5.    Persons authorized to hunt on Edwards AFB. ....	8
<b>Chapter 4—AUTHORIZED HUNTING AREAS</b>	<b>9</b>
4.1.    Authorized hunting areas are: .....	9
4.2.    Hunting areas are off limits to: .....	9
<b>Chapter 5—SPECIAL HUNTING RULES AND RESTRICTIONS FOR EDWARDS AFB</b>	<b>10</b>
5.1.    Hunting Days and Hours Authorized.....	10
5.2.    Waterfowl Hunting Rules. ....	10
5.3.    Edwards AFB Firearm Use Restrictions.....	13
5.4.    Edwards AFB Transportation of Firearms.....	13

5.5.	Required Forms and Reporting.....	14
5.6.	Vehicle Use Restrictions.....	14
5.7.	Camping.....	15
<b>Chapter 6—GENERAL FISHING PROVISIONS</b>		<b>16</b>
6.1.	CDFW laws will be: .....	16
6.2.	All people who fish on Edwards AFB must: .....	16
6.3.	Persons authorized to fish on Edwards AFB. ....	16
6.4.	Non-motorized watercraft use: .....	16
6.5.	Only personnel authorized by the 412 CEG/CEV will: .....	16
6.6.	Anglers will: .....	16
<b>Chapter 7—FISHING RESTRICTIONS FOR EDWARDS AFB.</b>		<b>17</b>
7.1.	People who are authorized to fish on Edwards AFB are: .....	17
7.2.	No fish hatchery feed is: .....	17
7.3.	The daily limit per person is: .....	17
7.4.	Fishing in the authorized area (Branch Memorial Park Pond) will be:.....	17
7.5.	Swimming:.....	17
7.6.	Lead-sinkers are not: A.....	17
7.7.	Each angler must:.....	17
7.8.	Each angler is required to: .....	17
<b>Chapter 8—MISCELLANEOUS RESTRICTIONS</b>		<b>18</b>
8.1.	It is unlawful to:.....	18
8.2.	Collection or depredation of animals: .....	18
8.3.	Anyone finding munitions, unexploded shells or similar objects:.....	18
8.4.	All historic ruins and prehistoric sites are: .....	18
8.5.	With the exception of gas or charcoal broilers or grills in designated areas: .....	18
<b>Chapter 9—APPLICATION</b>		<b>19</b>
9.1.	Any violations of: .....	19
9.2.	Anyone who violates: .....	19
9.3.	Military members who violate this instruction: .....	19

9.4. Civilian personnel who violate this instruction: ..... 19

**Attachment 1—GLOSSARY OF REFERENCES AND SUPPORTING INFORMATION 20**

**Attachment 2—EDWARDS AFB DUCK BLIND RESERVATION DRAWING 21**

**Attachment 3—AUTHORIZED HUNTING & FISHING AREAS – MAPS 24**

## Chapter 1

### ROLES AND RESPONSIBILITIES

#### 1.1. 412th Test Wing Commander (412 TW/CC)

- 1.1.1. Controls hunting and fishing activities.
- 1.1.2. Authorizes special events and any other requests falling under these regulations.
- 1.1.3. Authorizes temporary waivers and/or restrictions to this regulation when such action is not inconsistent with applicable Federal, State and/or Air Force regulations.
- 1.1.4. Suspends or revokes installation hunting and/or fishing privileges found violating Federal, State or installation wildlife laws or regulations.

#### 1.2. 412th Civil Engineer Group: Environmental Management Division (412 CEG/CEV)

- 1.2.1. Confers with the United States Fish and Wildlife Service and the California Department of Fish and Wildlife (CDFW) to ensure compliance with applicable Federal and State laws.
- 1.2.2. Manages web-based permit sales system, iSportsman ([www.edwards.isportsman.net](http://www.edwards.isportsman.net)) where permit and blind reservations are purchased, check-in/out services are located and where forms and other resources are made available.
- 1.2.3. Manages the use of funds received from the purchase of hunting and fishing permits and duck blind reservations.
- 1.2.4. Manages the expenditure of funds collected for the Fish and Wildlife Program.
- 1.2.5. Conducts field oversight and hunting/fishing program implementation.
- 1.2.6. Ensures individuals that do not have valid base access will be vetted on a Visitor Authorization List provided to the Visitor Control Center.

#### 1.3. 412th Security Forces Squadron (412 SFS)

- 1.3.1. The 412 SFS is the law enforcement agency for Edward AFB and enforces Federal laws and Air Force and base-level regulations.
- 1.3.2. If a citizen's complaint is received, Security Forces will make a determination whether or not to dispatch a patrol to investigate the incident. In addition, the 412 CEG/CEV or other conservation law enforcement officers (to include CDFW game wardens and United States Fish and Wildlife Service Federal Wildlife Officers (FWO)) may be notified to respond to assess the situation and take appropriate action.

1.3.3. Individuals who will be enforcing fish, wildlife and natural resources laws on Edwards AFB lands must receive specialized, professional training in compliance with the Sikes Act. The Commander can designate military personnel as "fish and wildlife law enforcement officers" on Edwards AFB, who can enforce all Federal, State, and military natural and cultural resources laws, only if those persons have been certified in conservation law enforcement through the successful completion of the Land Management Police Training course at the Federal Law Enforcement Training Center or have been commissioned as a fish and wildlife conservation officer in the State of California or FWOs. Individuals who do not possess these certifications can supplement fish and wildlife law enforcement under the direct supervision of certified personnel.

1.3.4. Coordinates with CDFW game wardens and/or FWOs who are authorized to assist Edwards AFB with enforcement of hunting and fishing regulations through Memorandums of Understanding.

## Chapter 2

### GENERAL PERMIT AND DUCK BLIND RESERVATION PROVISIONS

**2.1. Hunting & Fishing permits are required:** To hunt and fish on Edwards AFB. Permit fees are subject to change by the 412th Test Wing Commander without notice. Permits may be purchased from the Edwards iSportsman website ([www.edwards.isportsman.net](http://www.edwards.isportsman.net)).

#### 2.1.1. Fishing permits

2.1.1.1. General fishing permits – \$35. Valid for 1 year from date purchased. No license is required for children under age 16 who are accompanied by someone with a valid permit.

2.1.1.2. Daily fishing permit – \$15. Valid for 1 day.

#### 2.1.2. Hunting permits

2.1.2.1. Hunting permit – \$45. Active Duty Enlisted Military (E1 through E9). Valid for 1 year from the date purchased.

2.1.2.2. Hunting permit – \$50. Disabled Veteran. Valid for 1 year from the date purchased.

2.1.2.3. Hunting permit – \$75. Authorized personnel that are not Active Duty Enlisted Military or a Disabled Veteran. Valid for 1 year from the date purchased.

2.1.2.4. Daily Hunting permit – \$40. Valid for 1 day.

**2.2. Duck blind reservations:** Are sold at the annual duck blind drawing. Reservation fees are subject to change by the 412th Test Wing Commander without notice.

#### 2.2.1. Duck Blind reservations

2.2.1.1. Duck Blind reservation – \$150 per person; \$300 per blind. Valid throughout the waterfowl hunting season.

2.2.1.2. Partial Season Duck Blind reservation – \$100 per person; \$200 per blind. Valid for a set timeframe during the waterfowl hunting season. Timeframe to be determined for the season prior to the Blind Drawing.

### Chapter 3

#### GENERAL HUNTING PROVISIONS

**3.1. CDFW laws and special installation hunting rules:** Apply on Edwards AFB.

**3.2. All people who hunt on Edwards AFB must:** Carry valid picture ID. Hunters, 16 years of age or older, must carry an Edwards AFB Hunting and Fishing Permit (iSportsman permit print-out) and a California State hunting license. If hunting waterfowl, Federal and California State Duck Stamps are also required.

**3.3. It is mandatory that:** A full report be made immediately by hunters to the 412 SFS of any incident resulting in personal safety violations, or damage to property, signs, vehicles, etc.

**3.4. The use of a non-motorized watercraft:** Within the Piute Ponds Complex is allowed only during waterfowl hunting season to access duck blinds and retrieve fallen ducks or geese harvested or through written permission from the 412 CEG/CEV. All persons using watercraft must wear a life vest that is approved by the United States Coast Guard.

**3.5. Persons authorized to hunt on Edwards AFB.**

3.5.1. Active duty and retired military members and their dependents.

3.5.2. Current and retired employees of the Department of Defense, tenant organizations, and contractor employees assigned to Edwards AFB, and their dependents.

3.5.3. Dependents, covered under [paragraphs 3.5.1 and 3.5.2](#), under 16 years of age who are accompanied by a sponsor who has the proper permits. The sponsor is responsible for the conduct of the dependent.

3.5.4. Authorized members of the public for waterfowl hunting only.



## Chapter 4

### AUTHORIZED HUNTING AREAS

**4.1. Authorized hunting areas are:** Provided in this regulation ([Attachment 3](#)). Hunting on Edwards AFB is allowed only in these areas. Hunters may be authorized access to all hunting areas for legitimate hunting-related activities, such as scouting out hunting opportunities, tracking bird movements, or duck blind construction/repair. Public hunting is only allowed at the Piute Ponds Complex for authorized individuals.

**4.2. Hunting areas are off limits to:** All personnel not specifically authorized except the 412 SFS, State and FWOs, 412 CEG/CEV personnel, Emergency Response Teams, Outdoor Recreation personnel, and personnel engaged in legal hunting activities, and such other persons designated by or acting under the direction of the 412th Test Wing Commander or their command staff.

## Chapter 5

### SPECIAL HUNTING RULES AND RESTRICTIONS FOR EDWARDS AFB

#### 5.1. Hunting Days and Hours Authorized.

5.1.1. Waterfowl hunting is permitted only within the Piute Ponds Complex. Waterfowl hunting is authorized at the times listed in the State regulations: on Sundays, Wednesdays, Federal holidays (with the exception of Thanksgiving and Christmas) and on the first Saturday of the duck-hunting season. When there is a split season for ducks, and the second split opens on a Saturday, hunting will be authorized on the opening Saturday. If it is a split season for ducks and either the first or second split ends on a Saturday, hunting will be authorized for that Saturday. A Waterfowl Youth Hunt will be held in accordance with State of California regulations. Waterfowl hunting will not be authorized on Edwards AFB prior to the first (opening) weekend for ducks as established by the CDFW.

5.1.2. Dove, quail, chukar, and rabbit hunting is permitted during the days and hours posted in the State regulations. Dove hunting is permitted in hunting Area 1 (Bissell Hills) and Area 2 (Mesquite Woodlands) during the early and late season should they both be authorized.

5.1.3. Archery hunting is allowed for rabbit only in Area 2 (Mesquite Woodlands).

5.1.4. Military missions may require further limitation. To avoid inconvenience, hunters should check the “News” tab and/or the interactive map on the iSportsman website prior to leaving for hunting areas to make sure the hunting areas are open for use.

5.1.5. The CDFW publishes hunting season dates, starting times for shooting and daily bag limits and possession limits for waterfowl, upland game and rabbits.

5.1.6. All persons that hunt and or fish on Edwards AFB are required to check into their hunting or fishing areas prior to beginning their recreational activities and check out when the activity is completed each day using Edward’s iSportsman website unless the system is not functioning.

#### 5.2. Waterfowl Hunting Rules.

##### 5.2.1. Duck Blind Sales.

5.2.1.1. A duck blind reservation is required to reserve a permanent location for the duration of the duck hunting season ([Attachment 2](#)). On authorized hunting days, the primary duck blind reservation holder and his or her chosen blind partner, who must also be a blind reservation holder, control the use of their blind when either occupies the blind.

5.2.1.2. At least one blind will be designated as a handicap blind for use by mobility impaired individuals (individuals with a condition which severely impairs their ability to access a duck blind, such as a wheel chair, walker, artificial limb, cane, etc.).

5.2.1.3. The 412 CEG/CEV will conduct the annual duck blind drawing.

5.2.1.4. Drawings for the duck blinds will be held at a location, date, and time designated by the 412 CEG/CEV. An announcement will be provided in advance of the drawing by e-mail or other public media.

5.2.1.5. Purchase of a duck blind reservation and location is no guarantee by Edwards AFB that there will be water at that location during the waterfowl hunting season. After being purchased, no refunds for blind reservation fees are authorized.

5.2.1.6. Hunters will be requested to sign a letter or verify an acknowledgement authorizing release of their telephone number and e-mail. If hunters choose not to sign a letter authorizing the release of a telephone number and e-mail, they acknowledge the blind will be available on a first arrival basis on hunting days.

5.2.2. Within the waterfowl hunting area, all shooting must be conducted from within a blind at a designated blind location. The use of temporary blinds will not be permitted. Hunters will not move permanent blinds or designated blind locations, without written permission from the 412 CEG/CEV. Hunters will not erect additional blinds not authorized in the designated locations assigned during the duck blind drawing.

5.2.3. Jump shooting is not allowed at any time.

5.2.4. No more than four people are allowed in a blind at any one time.

5.2.5. Any Edwards AFB hunting permit holder with proper State and Federal licenses and stamps may use unoccupied blinds; however, individuals should secure the duck blind reservation holder's permission before the morning of the hunt. Contact information of reservation holders will be available for individuals making use of a blind. Individuals making use of a blind, who have not secured permission to do so, must leave at the request of the reservation holder, except as noted in 5.2.1.6.

5.2.6. When making use of another individual's duck blind, the blind and any decoys must be left as they were found. Another hunter's equipment shall not be used unless given expressed permission from the owner.

5.2.7. All persons, when hunting waterfowl on Edwards AFB, will have a means of retrieval.

5.2.8. Hunters must leave at least one intact wing on each bird harvested for proper identification by law enforcement officials and 412 CEG/CEV representatives. If a hunter chooses to clean their birds on site, all feathers and removed body parts must be bagged and disposed of properly.

5.2.8.1. Hunters are required to stop at hunter check stations when present and in use. If the check station is not available, hunters are required to fill out the online questionnaire when checking out on the Edwards iSportsman website. If the website is unavailable, the hunter must fill out the Hunter Survey Form 6014 and mail it to the 412 CEG/CEV within one week of the hunting day. The hunter check stations are usually located at the Avenue C and Shuttle Road entry to the Piute Ponds Complex.

5.2.8.2. Hunters must be in their blinds a minimum of 30 minutes before the starting time for shooting. Driving on any roads or dikes is not authorized from one hour prior to shoot time to 0900. Hunters are required to stay in blinds and off dikes until 0900. Late arrivals may disrupt hunting, and place the individual in the line of fire from the next blind; therefore, late arrivals will be turned away until after 0900.

5.2.9. Indiscriminate walking and loud talking in hunting areas is not permitted.

5.2.10. Only authorized personnel are allowed to control the flow and level of water in the waterfowl hunting areas. Unauthorized tampering with water flow control devices may result in hunting closures.

5.2.11. Hunters will make every reasonable effort to retrieve wounded game.

5.2.12. Hunters will retrieve downed birds as soon as possible with as little interference to other hunters as possible. Hunters are encouraged to use dogs; however, they must be kept under control at all times. Repeat issues with a dog misbehaving may result in the dog being barred from the property.

#### 5.2.13. Duck Blind Maintenance, Construction and Inspection

5.2.13.1. Duck blind reservation holders are responsible for constructing and maintaining a blind in the permanent numbered location they purchased. All debris removed from the duck blind location during construction and maintenance must be removed the same day from the Piute Ponds Complex and disposed of properly. Purchasing a blind reservation is a commitment to provide the necessary materials and do the necessary work to construct and/or maintain the blind in an acceptable condition. Relocating the blinds without approval from the 412 CEG/CEV is prohibited.

5.2.13.1.1. Duck blinds should blend as much as possible into the surrounding area.

5.2.13.1.2. Duck blind reservation holders are responsible for cutting pond frontage (cattails, bulrushes, Bassia, and other aquatic vegetation) if they feel it is necessary around their blinds. Vegetation removal around the blind or to access a blind must be reviewed and approved by the 412 CEG/CEV prior to any vegetation removal or ground disturbance. Driving off established roads to reach a blind is strictly prohibited. Ground disturbance activities without pre-approval may be grounds for revocation of hunting privileges.

5.2.13.1.3. Duck blinds must be ready for preliminary inspection three weeks before opening day unless the date is extended in writing by the 412 CEG/CEV. The 412 CEG/CEV will conduct duck blind inspections as needed. The 412 CEG/CEV will notify blind reservation holders if a blind is unacceptable, located in the incorrect location and if repairs need to be made. All repairs and moves will be completed and final inspection will be made within two weeks of unacceptable or repair notice. Any blind failing to pass final inspection will be grounds to revoke an individual's blind reservation.

5.2.14. All decoys and watercraft must be removed from the waterfowl hunting area within two weeks after the close of waterfowl season. The duck blinds must be cleared of all garbage and shell casings after each hunting day during the waterfowl season. The primary and secondary blind holders are responsible for the cleanup. There will be an inspection by the 412 CEG/CEV two weeks after the hunting season. Failure to pass inspection may result in revoking privileges of owning a blind for the next waterfowl season.

5.2.15. Duck blind reservation holders who have their blind revoked will forfeit their blind fee and no refund will be made. The blind will then be issued to the first individual on a waiting list developed from names drawn at the blind drawing for which no blinds were available or subsequent inquiries after the blind drawing.

### **5.3. Edwards AFB Firearm Use Restrictions**

5.3.1. The only firearm authorized for use and possession while hunting is a shotgun. Hunters must follow the California State regulations for the size and type of shot to be used. A hunter shall not possess more than 25 shot shells while in the field.

5.3.2. No one will carry a loaded firearm in a vehicle, or shoot from within or upon any vehicle, whether moving or stationary (loaded firearm meaning an unexpended cartridge in a chamber or in a magazine, which is attached to the firearm).

5.3.3. No one will shoot any firearm towards or within 150 yards of any occupied building, dwelling, fenced developed area, or across a public or installation road (to include all access roads around the Piute Ponds Complex) or highway.

5.3.4. Waterfowl hunters may not shoot directly at adjacent blinds.

5.3.5. Hunters within 200 yards of the Piute Ponds Complex waterfowl camping area are prohibited from shooting in that direction when individuals, campers or vehicles are present. It is the hunter's responsibility to determine whether campers or vehicles are present.

5.3.6. While hunting on the installation, the use or possession of alcoholic beverages is prohibited.

5.3.7. Hunting or trapping of predators, such as coyotes, bobcats, badgers, or other game or non-game animals not specifically outlined in this instruction, is prohibited.

5.3.8. Target practice is only authorized at the Small Arms Range, or at the Rod and Gun Activity with the proper authorization.

5.3.9. Falconry hunting is prohibited.

5.3.10. Archery equipment used will be in accordance with the State regulations. Crossbows are prohibited.

### **5.4. Edwards AFB Transportation of Firearms.**

5.4.1. At the Piute Ponds Complex, privately owned weapons will be transported in a motor vehicle via Avenue C from the Avenue C padlock gate at the base boundary or via Shuttle Road from Rosamond Boulevard when entering and exiting the area during hunting season. Access to the Piute Ponds Complex is not currently permitted at the East Avenue E/10th Street intersection. Personnel transporting privately owned weapons for hunting at the Piute Ponds Complex must always have a current Edwards AFB hunting permit (iSportsman permit print-out) in their possession (see [paragraph 1.2.2](#)).

5.4.2. In all areas except the Piute Ponds Complex, privately owned weapons may be transported in a motor vehicle only when driving directly between the Rod and Gun Club, Edwards AFB gates, Army and Air Force Exchange Service facilities, Military Family Housing and/or the 412 SFS armory, and the authorized hunting areas. Hunters who are authorized access to Edwards AFB must check in at the installation entry gate when transporting privately owned weapons and must have a valid Edwards Hunting and Fishing Permit (iSportsman permit print-out). For military housing residents or privately owned weapons stored in the 412 SFS armory, personnel must have a copy of their Air Force Form 1314 in their possession.

5.4.3. Transportation of loaded firearms is prohibited. Ammunition will be stored in a separate area of the vehicle away from the firearm.

5.4.4. Firearms will be transported in the trunk compartment of the vehicle. If the motor vehicle has no trunk compartment, the firearm must be kept out of reach, behind the seat or in a gun rack.

5.4.5. Motor vehicles containing firearms must not be left unattended at any time.

## **5.5. Required Forms and Reporting.**

5.5.1. Each hunter must check-in and check-out daily using the online Edwards iSportsman website Check-in/Check-out feature. Failure to check-in and check-out as required by this instruction may result in the revocation of an individual's hunting privileges unless the system is not functioning.

5.5.2. Each member of a hunting party must complete an Edwards AFB online harvest questionnaire, located on the iSportsman website, immediately after each hunt day when checking out of the area. If the website is down, a Hunter Survey Form 6014 may be filled out for each party after each hunt day. The completed Form 6014 will be turned in to the 412 CEG/CEV within one week of the hunting day. Completion of the Hunter Survey Questionnaires/Form 6014 are needed for monitoring recreation use and harvest levels. Failure to fill out the online questionnaire or turn in the completed Form 6014 or when checking out on the Edwards iSportsman website as required by this instruction may result in the revocation of an individual's hunting privileges. Copies of Hunter Survey Form 6014 may be obtained at the 412 CEG/CEV or on the Edwards iSportsman website.

5.5.3. All motor vehicles used by hunters while hunting on Edwards AFB will display Edwards AFB Hunter's Vehicle Identification Form 6013. An Edwards AFB Form 6013 will be available on the Edwards iSportsman website. The Form 6013 is needed to ensure hunter safety and installation security.

## **5.6. Vehicle Use Restrictions.**

5.6.1. Vehicles must remain on existing roads. Off road travel is prohibited.

5.6.2. Dry lake areas are off limits to hunters and vehicle traffic.

5.6.3. All waterfowl hunters using Hunting Area 3 (Piute Ponds Complex) must park their cars in authorized areas. To prevent disturbing waterfowl, hunters will refrain from slamming vehicle doors.

5.6.4. On authorized hunting days in waterfowl hunting areas, driving on all access roads within the complex with motor vehicles is prohibited from 1 hour prior to the start time listed in the State waterfowl hunting regulation until 0900.

**5.7. Camping.**

5.7.1. Camping in Hunting Area 3 (Piute Ponds Complex) will be allowed only within the area designated in this instruction, and only on nights prior to hunting days.

5.7.2. No open fires will be permitted except while camping, and then only the use of gas or charcoal grills is permitted. Grills will never be left unattended while in use.

5.7.3. Camping areas must be kept free of trash.

## Chapter 6

### GENERAL FISHING PROVISIONS

**6.1. CDFW laws will be:** Applied on Edwards AFB, except where further limited by special fishing rules.

**6.2. All people who fish on Edwards AFB must:** Carry valid ID, and all individuals 16 and older must carry a valid Edwards AFB Fishing Permit (iSportsman permit print-out) and a California State Fishing License in immediate possession while engaging in fishing.

**6.3. Persons authorized to fish on Edwards AFB.**

6.3.1. Active duty and retired military members and their dependents.

6.3.2. Current and retired employees of the Department of Defense, tenant organizations, and contractor employees assigned to Edwards AFB, and their dependents.

6.3.3. Dependents under 16 years of age who are accompanied by a sponsor who has the proper permits. The sponsor is responsible for the conduct of the dependent.

**6.4. Non-motorized watercraft use:** Is permitted at the Branch Memorial Park Pond. All persons using watercraft must wear a life vest that is approved by the United States Coast Guard. A limit of two boats on the pond at any one time is allowed for a maximum of two hours if other anglers are waiting to use their boats. There is no limit on the number of persons using individual floating waders.

**6.5. Only personnel authorized by the 412 CEG/CEV will:** Transport live fish for stocking purposes on Edwards AFB.

**6.6. Anglers will:** Report immediately to 412 SFS any incident resulting in risk to personal safety, or damage to property, signs, vehicles, etc.



## Chapter 7

### FISHING RESTRICTIONS FOR EDWARDS AFB.

**7.1. People who are authorized to fish on Edwards AFB are:** Limited to the use of one rod and reel, one pole and line, or one hand-held line that must be under the immediate control of the person fishing. There is a limit of one hook per line.

**7.2. No fish hatchery feed is:** Permitted except when used by the 412 CEG/CEV.

**7.3. The daily limit per person is:** Three fish per day. Anglers catching catfish less than 10 inches in length and bass less than 12 inches in length will release these back into the pond.

**7.4. Fishing in the authorized area (Branch Memorial Park Pond) will be:** Allowed all year, during daylight hours, except when the pond is temporarily closed for stocking. The 412 CEG/CEV will post signs and/or send out notifications for any pond closures.

**7.5. Swimming:** By humans or animals, in Branch Memorial Park Pond is prohibited.

**7.6. Lead-sinkers are not:** Authorized for use at Branch Memorial Park Pond.

**7.7. Each angler must:** Check-in and check-out daily using the online Edwards iSportsman website Check-in/Check-out feature. Failure to check-in and check-out as required by this instruction may result in the revocation of an individual's fishing privileges unless the system is not functioning.

**7.8. Each angler is required to:** Immediately fill out the online questionnaire, located on Edwards iSportsman website, when checking out on the Edwards iSportsman website for each day of fishing. If the website is down, the angler may complete an Edwards AFB Fish Survey Form 6015. The completed Form 6015 can be turned into the 412 CEG/CEV. Copies of the survey Form 6015 may be obtained on the Edwards iSportsman website. Completion of the online questionnaire/Survey Form 6015 are necessary for monitoring recreation use and ensuring proper stocking rates. Failure to complete the online questionnaire or survey form as required by this instruction may result in the revocation of an individual's fishing privileges.

## Chapter 8

### MISCELLANEOUS RESTRICTIONS

**8.1. It is unlawful to:** Sell, purchase, harm, harass, take, possess, transport or shoot a projectile at a desert tortoise or at any other Federal endangered or threatened species.

**8.2. Collection or depredation of animals:** Not specifically authorized under this hunting regulation is prohibited.

**8.3. Anyone finding munitions, unexploded shells or similar objects:** Must report such findings to 412 SFS. Such objects will not be touched or disturbed except by the 812th Civil Engineer Squadron, Explosive Ordnance Disposal Flight (812 CES/CED) personnel.

**8.4. All historic ruins and prehistoric sites are:** Protected under the Archaeological Resources Protection Act, National Historic Preservation Act (NHPA) and AFMAN 32-7003, *Environmental Conservation*. Persons responsible for removal of artifacts and/or vandalism to historic or prehistoric sites are subject to prosecution.

**8.5. With the exception of gas or charcoal broilers or grills in designated areas:** The use of an open fire is prohibited on Edwards AFB. Use of a gas or charcoal grill within 15 feet of any building is prohibited. Grills may not be left unattended when in use.

## Chapter 9

### APPLICATION

**9.1. Any violations of:** The provisions of this instruction must be reported immediately to the 412 CEG/CEV. The 412 CEG/CEV may require corrective action to address the violation, and/or may refer violations to the appropriate law enforcement agency.

**9.2. Anyone who violates:** Any provisions of this instruction or commits an act inconsistent with safe practices resulting in the injury or damage to persons or property, may have their hunting or fishing privileges withdrawn.

**9.3. Military members who violate this instruction:** May be subject to punitive action under the Uniform Code of Military Justice (UCMJ) and/or the fish and game laws for the State of California.

**9.4. Civilian personnel who violate this instruction:** May be subject to punitive action by the United States Magistrates Court or the State of California, whichever is applicable.

MATTHEW W. HIGER  
Brigadier General, USAF  
Commander

**Attachment 1****GLOSSARY OF REFERENCES AND SUPPORTING INFORMATION*****References***

**AFI 33-322**, *Records Management and Information Governance Program*, dated 23 March 2020

**AFMAN 32-7003**, *Environmental Conservation*, dated 20 April 2020

**INRMP**, *Integrated Natural Resources Management Plan Edwards Air Force Base, California*, dated 31 May 2017

***Prescribed Forms***

**EDWARDSAFB 6013**, *Hunter's Vehicle Identification*

**EDWARDSAFB 6014**, *Hunter's Survey*

**EDWARDSAFB 6015**, *Fisherman's Survey*

***Adopted Forms***

**AF Form 847**, *Recommendation for Change of Publication*

***Abbreviations and Acronyms***

**412CEG/CL**—Base Civil Engineer

**412CEG/CEV**—412th Civil Engineer Group, Environmental Management Division

**412SFS**—412th Security Forces Squadron

**AF**—Air Force

**CDFW**—California Department of Fish and Wildlife

**EAFB**—Edwards Air Force Base

**FWO**—Federal Wildlife Officer

**INRMP**—Integrated Natural Resources Management Plan

**OPR**—Office of Primary Responsibility

**RDS**—Records Disposition Schedule

**UCMJ**—Uniform Code of Military Justice

## Attachment 2

### EDWARDS AFB DUCK BLIND RESERVATION DRAWING

**A2.1. To be eligible to draw or be selected as a blind partner:** Base hunters must have a current Edwards AFB hunting permit at the time of the drawing. To be eligible to draw or be selected as a blind partner, hunters must also show a current State hunting license and federal and state duck stamp to drawing officials. All persons in Priority 1-5 must sign a letter certifying they intend to hunt from the duck blind they select.

**A2.2. Hunting permit holders must be:** 18 years of age to participate in the blind drawing or be selected as a blind partner.

**A2.3. Duck blinds will be reserved for one year.** Drawings will be held each year for all designated active blinds.

**A2.4. When on-Base hunting facilities are limited, priorities for use will be drawn.** For the purposes of this instruction, and this instruction only, duck blinds are considered to be an on-base facility. In general summary, these priorities are:

A2.4.1. Priority 1 – Active duty assigned to Edwards AFB who have contributed sufficient volunteer time (see section A2.4.6), 100% disabled veterans, Medal of Honor recipients, and their dependents.

A2.4.2. Priority 2 – Active duty assigned to Edwards AFB and their dependents.

A2.4.3. Priority 3 – Persons who have contributed sufficient volunteer time to receive a bump to Priority 3 (see section A2.4.6).

A2.4.4. Priority 4 – Active duty assigned to another military installation, military retired, members of Reserve components while on orders at the time of the drawing, and their dependents.

A2.4.5. Priority 5 – Military personnel of foreign nations who are authorized exchange privileges, unmarried spouses of military personnel who died while on active duty or while in a retired status, and their dependents.

A2.4.6. Priority 6 – Others who are authorized by the 412th Test Wing Commander (those authorized by this instruction to purchase an Edwards AFB hunting permit).

A2.4.7. Priority Bump – Persons who perform authorized volunteer work in support of the wildlife conservation program at the Piute Ponds Complex, and have performed this volunteer work prior to the duck blind drawing, will have their drawing priority increased (decreased numerically) by 1 level for every 10 hours, with a cap at Priority 3 for persons not meeting the requirements for Priority 1 or Priority 2.

**A2.5. Prior to the duck blind draw anyone requiring a handicapped blind will make this known to the duck blind operators in order for the following procedures to apply.**

A2.5.1. Handicap hunters will draw with the rest of the hunters for a blind priority number to ensure they are eligible to obtain a duck blind. Upon winning the opportunity to choose a blind, mobility impaired hunters will be given the option of taking the handicap access blind or participating in the general blind selection using their priority number previously drawn. If the handicapped hunter chooses to participate in the general blind selection, the option of using the designated handicap blind will be forfeited for the year, and the handicapped blind will revert to the general blind category.

**A2.6. Permits modified in any way such as by lamination or other physical alteration will be excluded from the drawing.**

**A2.7. To participate in the blind drawing, a person must be present or must be represented at the drawing.**

**A2.8. Blind reservation holders must:** Supply the 412 CEG/CEV with their full name and the best contact phone number and email address of the primary blind reservation holder and his or her selected blind partner. This must be provided at the time of the drawing or the blind will not be assigned.

**A2.9. For those being represented at:** The drawing and falling into priorities 1 through 5, they must have entered their name on a list compiled by the 412 CEG/CEV prior to the drawing and they must have verified their priority status through the display of their military ID. They must also show an Edwards Hunting license, current State hunting license, Federal and State duck stamp, and sign a letter certifying their intent to hunt from the selected duck blind.

**A2.10. For those being represented at:** The drawing and falling into priority 6, they must provide their representative with a current Edwards Hunting license, current State hunting license, and federal and state duck stamp.

**A2.11. An individual representing another at the blind drawing:** Must be able to provide drawing officials the following: Edwards AFB hunting permit of the person being represented, the permit of his or her selected partner, their current State hunting license, Federal and State duck stamp, signed letters certifying their intent to hunt from the selected duck blind, proof of their priority status (if not on the priority list for those with military ID), their blind reservation fees, and the best contact phone number and email address.

**A2.12. Hunting permits or assigned tickets will:** Be placed in boxes based on the priority of the permit holder. An official from the 412 CEG/CEV will ensure that all hunting permits or assigned tickets are placed in the proper box prior to the drawing. Hunters will provide proof of their eligibility for a specific priority to this official.

**A2.13. Permits or assigned tickets will be drawn in order of priority.**

**A2.14. Individuals who have their permit or assigned ticket drawn and have not selected:** Or who did not immediately select, an eligible blind partner, may have one selected for them by the drawing officials from the 412 CEG/CEV. If a partner is not available or assigned at the drawing, a partner may be assigned after the drawing up to 1 week prior to the hunting season.

**A2.15. The 412 CEG/CEV will:** Continue to draw additional permits after all available blinds have been selected. This will be accomplished to create a backup waiting list for use if and when a blind reservation is revoked due to reasons such as inadequate blind construction or renovation.

**A2.16. An individual may not:** Draw for more than one blind reservation.

**A2.17. A blind reservation may not be:** Transferred without authorization from the 412 CEG/CEV and may not be sold except by the 412 CEG/CEV.

**A2.18. Authorized duck blinds:** Not sold at the drawing, if any, may be purchased from the 412 CEG/CEV through the Edwards iSportsman website at a later date after the 412 CEG/CEV has confirmed the eligibility as outlined in this instruction.

**A2.19.** Only one family member within a household may: Participate in the annual duck blind reservation drawing unless there is more than one active duty member in a household.

**A2.20. Edwards AFB prohibits hunters:** From receiving or providing any financial or substantive gain of any kind for blind partnerships. If such actions occur, hunting licenses and blind reservations will be revoked for all parties involved.

**A2.21. Falsifying eligibility or priority information or claims:** To personnel running the duck blind drawing will result in the revocation of permission to participate in the Edwards AFB Hunting program. First offense will result in loss of hunting privileges for a year. Second offense will result in the loss of hunting privileges for 5 years. Third offense will result in the permanent loss of hunting privileges on Edwards AFB.

Attachment 3

AUTHORIZED HUNTING & FISHING AREAS – MAPS

Figure A3.1. Hunting and Fishing Areas Edwards Air Force Base.

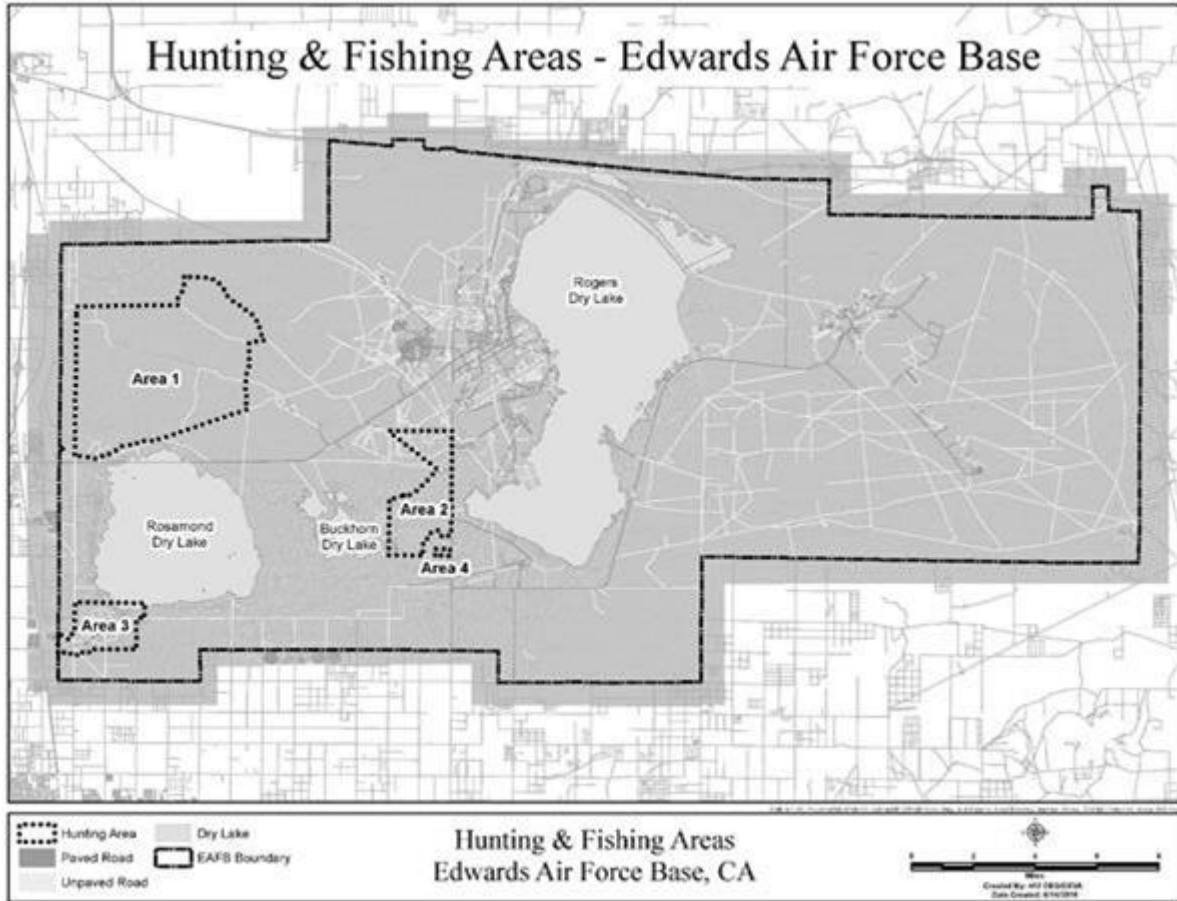




Figure A3.2. Bissell Hills Hunting Area 1.

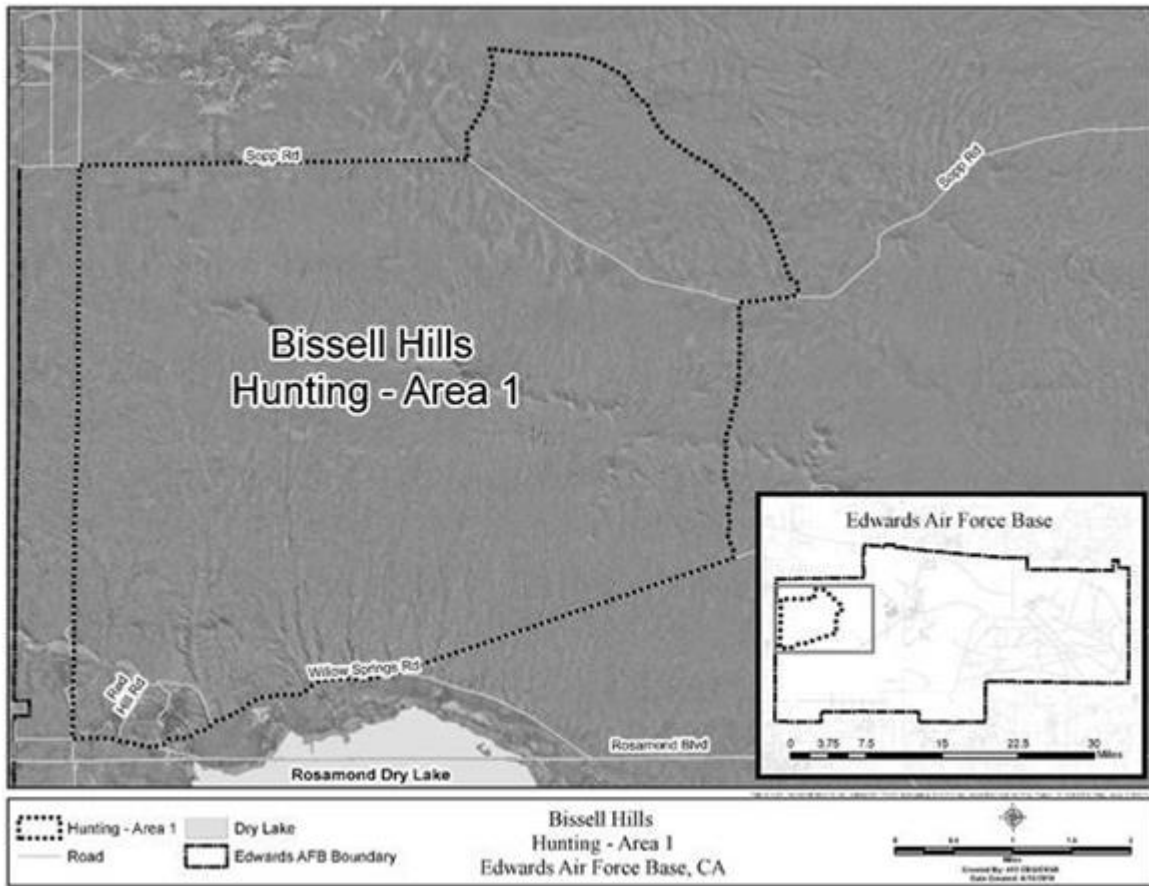


Figure A3.3. Mesquite Woodlands Hunting Area 2.

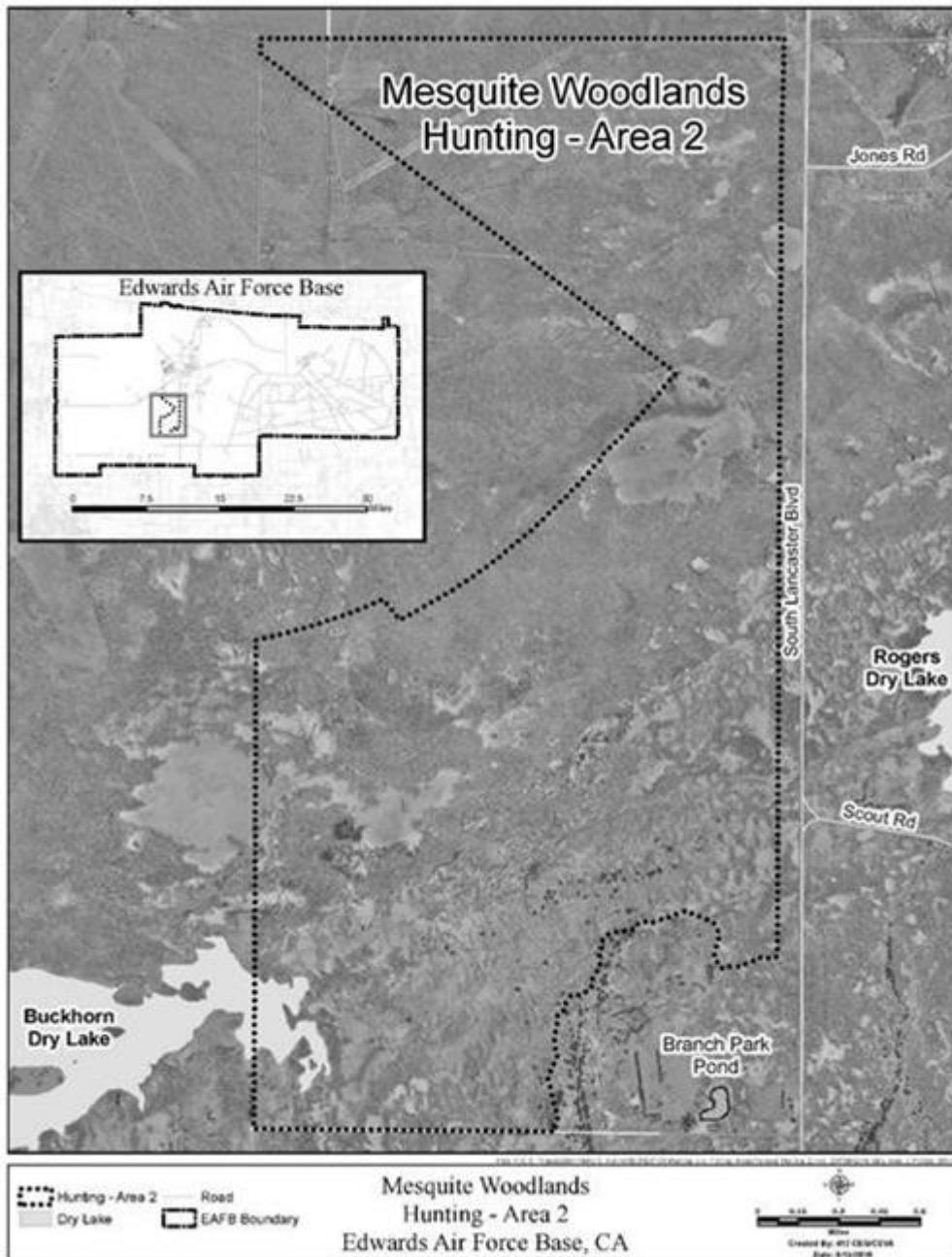


Figure A3.4. Piute Ponds Complex Hunting Area 3.

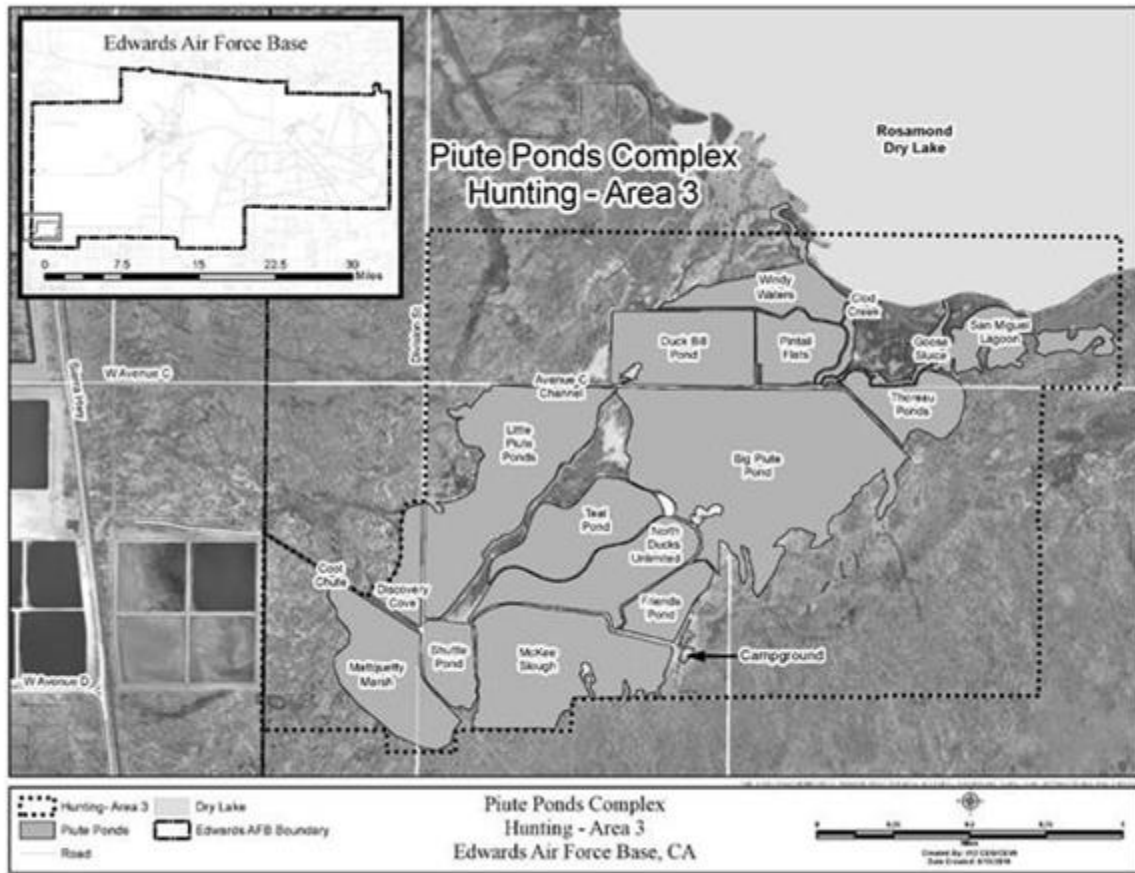


Figure A3.5. Piute Ponds Complex Campground and Buffer Zone Area 3.

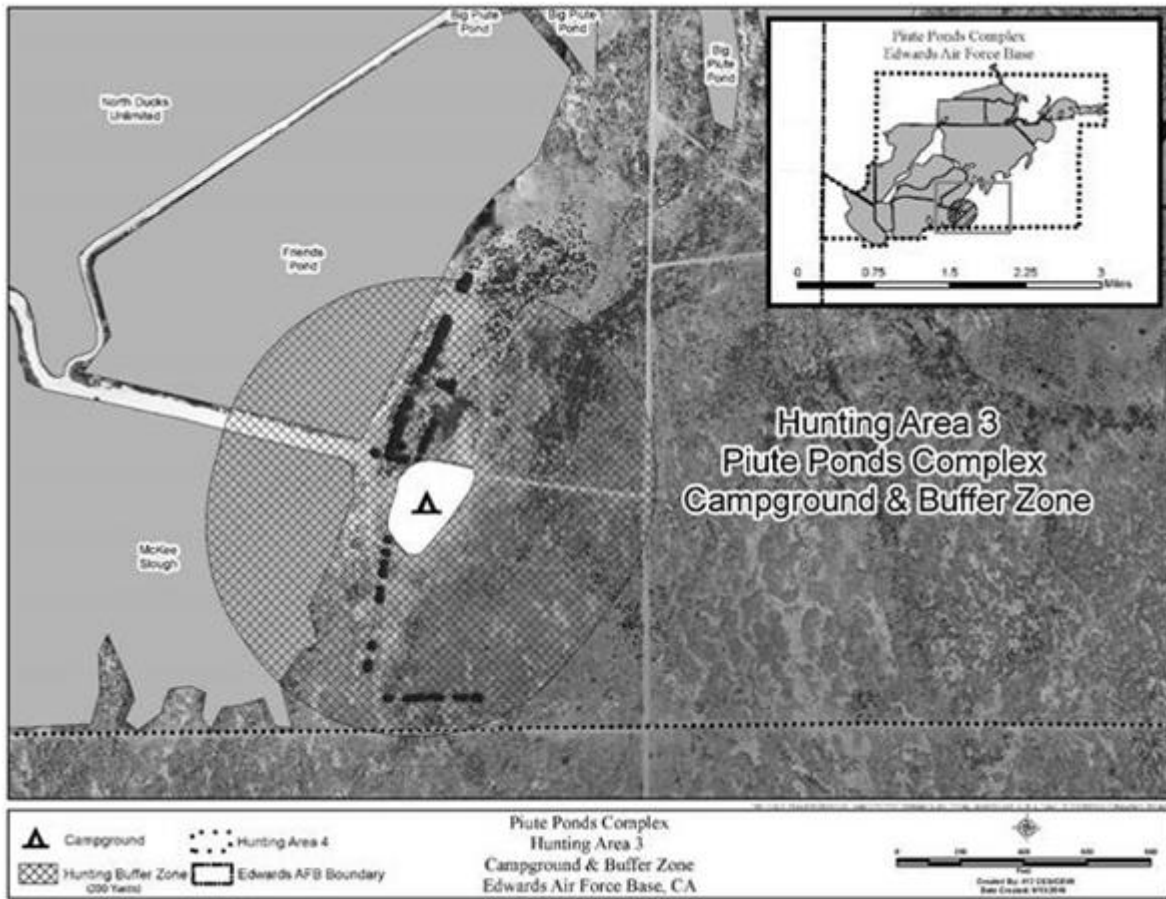


Figure A3.6. Branch Memorial Park Pond Fishing Area 4.

